



# The Private Club Lifestyle

NATIONAL GOLF & COUNTRY CLUB - RESIDENTIAL

[www.nationalgolf.ro](http://www.nationalgolf.ro)



# Golf, Residential & Country Club

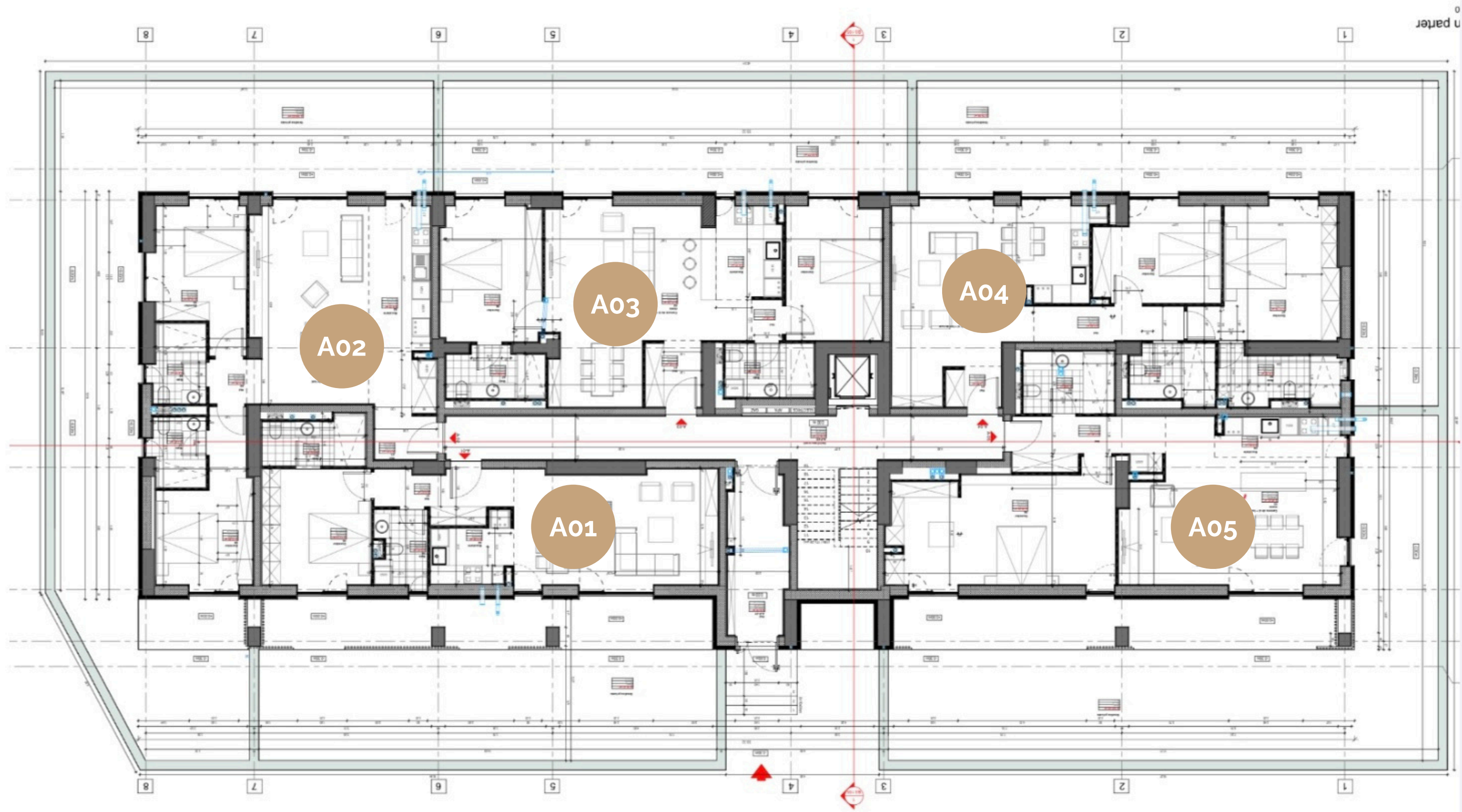
THE FIRST GOLF & COUNTRY CLUB IN ROMANIA

- 70 ha of land;
- Championship golf course;
- Residential compound:
  - 160 individual villas,
  - 12 townhouses,
  - 110 apartments;
- Resort facilities:
  - gym & sports,
  - kids area,
  - bars & restaurants.





# MASTERPLAN





# MASTERPLAN







# APARTAMENTS PRIVATE GARDEN

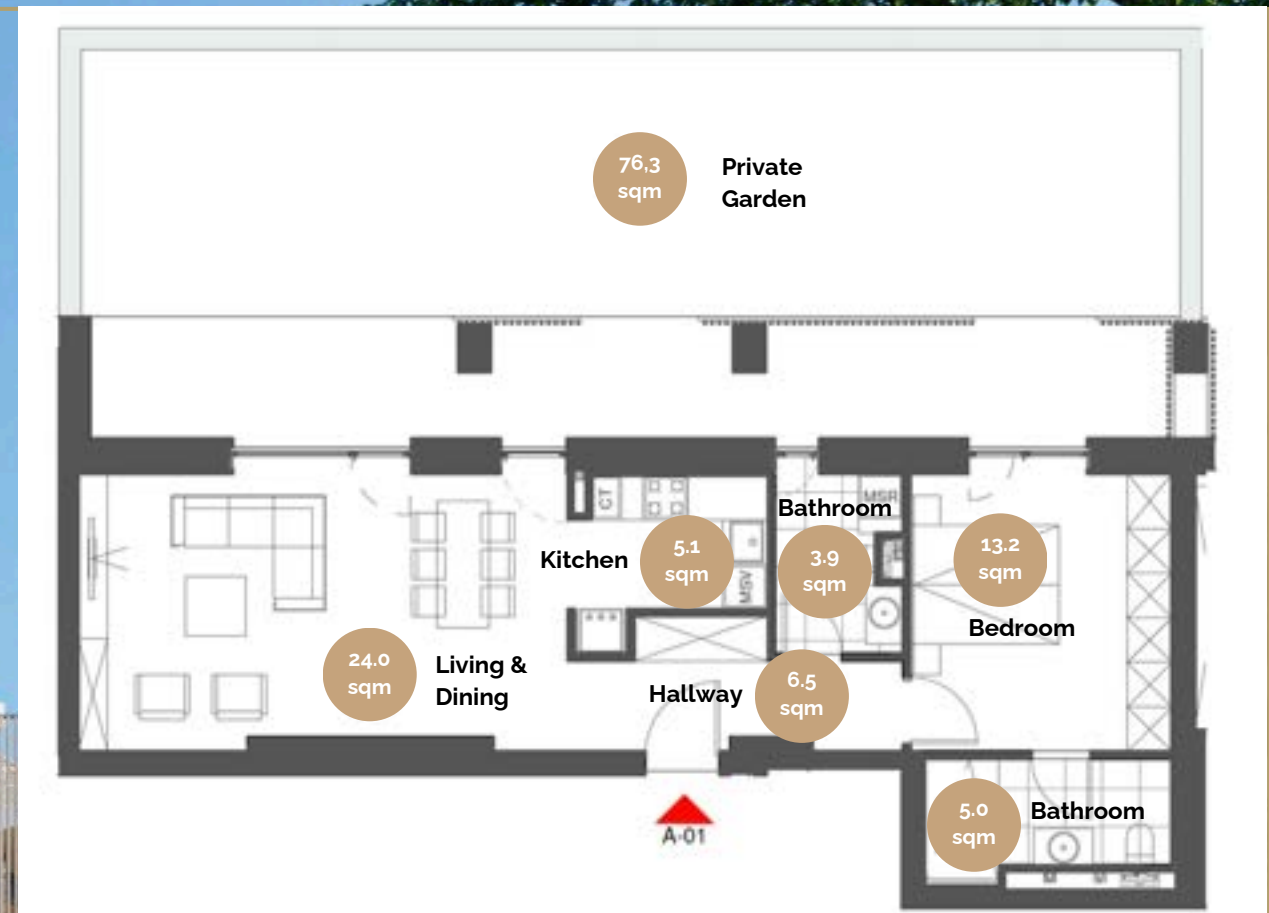




# APARTMENT TYPE A01

|   |   |           |
|---|---|-----------|
|    | BEDROOMS                                  | 1         |
|   | BATHROOMS                                 | 2         |
|  | PRIVATE GARDEN                            | 76.3 SQM  |
|  | TOTAL BUILT SURFACE<br>(INCLUDING GARDEN) | 156.0 SQM |

EUR 170,000 + VAT





# APARTMENT TYPE A02



|  |   |           |
|--|---|-----------|
|  | BEDROOMS                                  | 2         |
|  | BATHROOMS                                 | 2         |
|  | PRIVATE GARDEN                            | 104,0 SQM |
|  | TOTAL BUILT SURFACE<br>(INCLUDING GARDEN) | 212,9 SQM |

EUR 225,000 + VAT

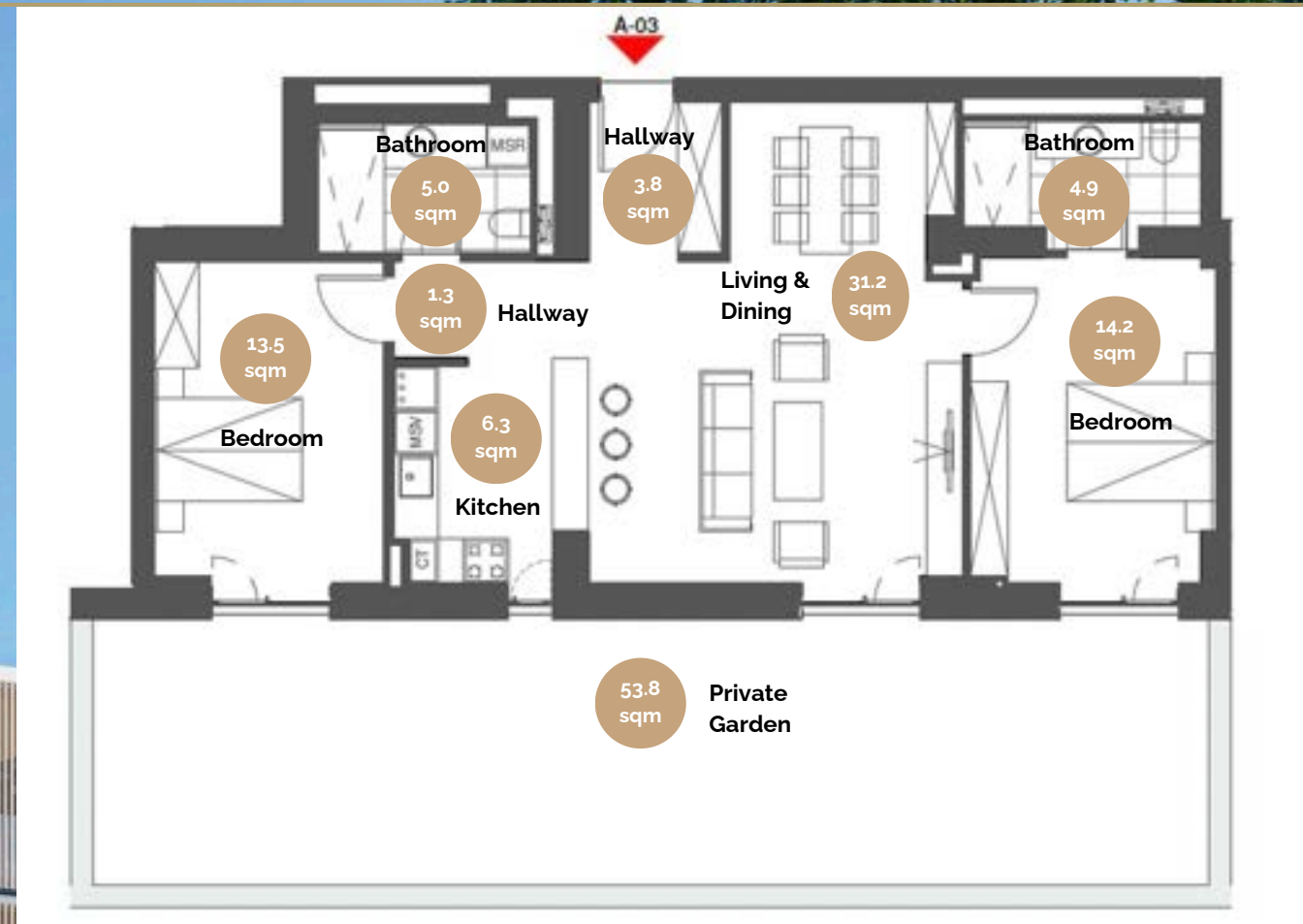




# APARTMENT TYPE A03


|   |   |           |
|---|---|-----------|
|    | BEDROOMS                                  | 2         |
|   | BATHROOMS                                 | 2         |
|  | PRIVATE GARDEN                            | 53.8 SQM  |
|  | TOTAL BUILT SURFACE<br>(INCLUDING GARDEN) | 157.7 SQM |

RESERVED

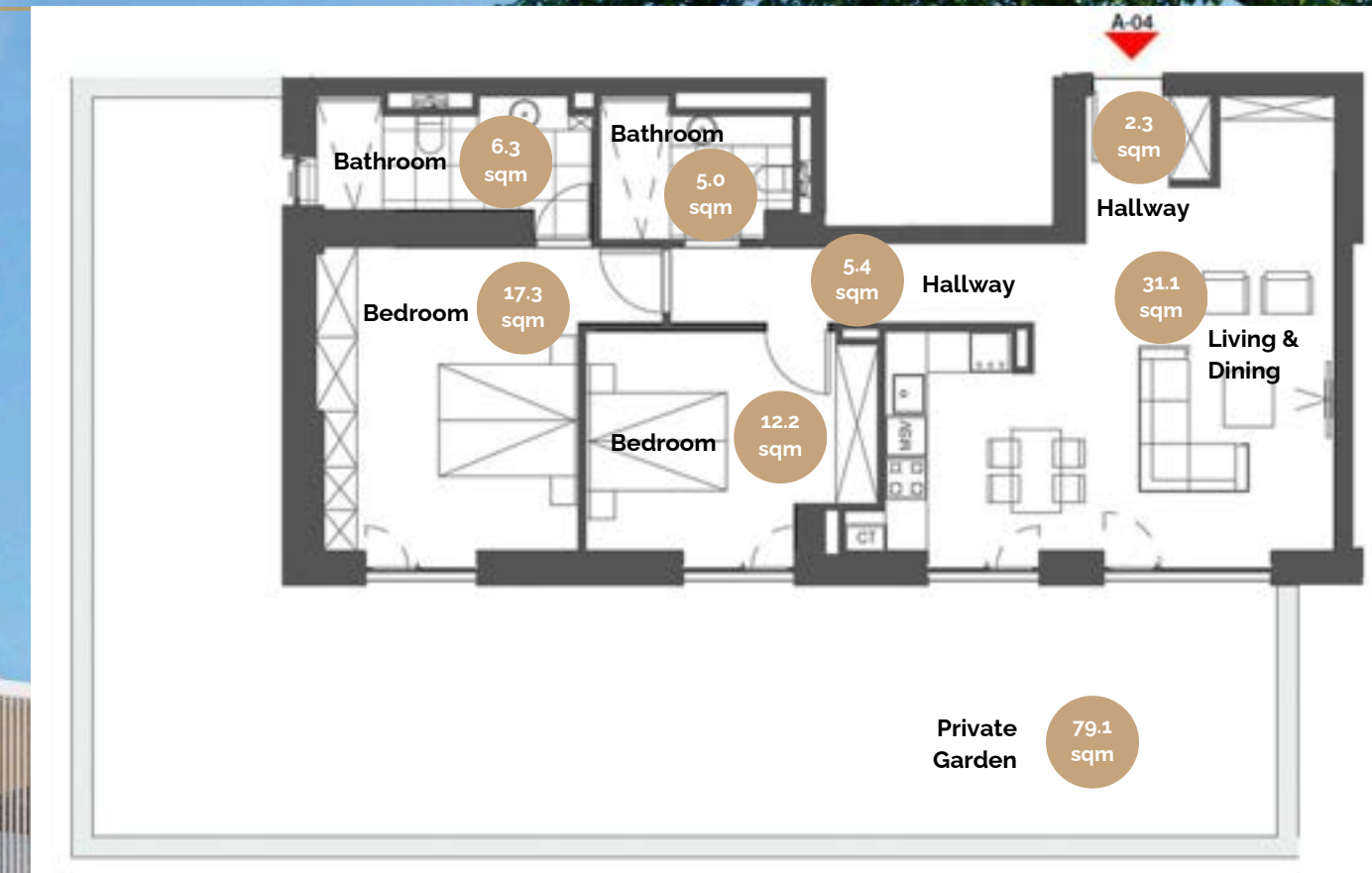




# APARTMENT TYPE A04





|   |   |           |
|---|---|-----------|
|    | BEDROOMS                                  | 2         |
|   | BATHROOMS                                 | 2         |
|  | PRIVATE GARDEN                            | 79,1 SQM  |
|  | TOTAL BUILT SURFACE<br>(INCLUDING GARDEN) | 188.8 SQM |

EUR 220,000 + VAT

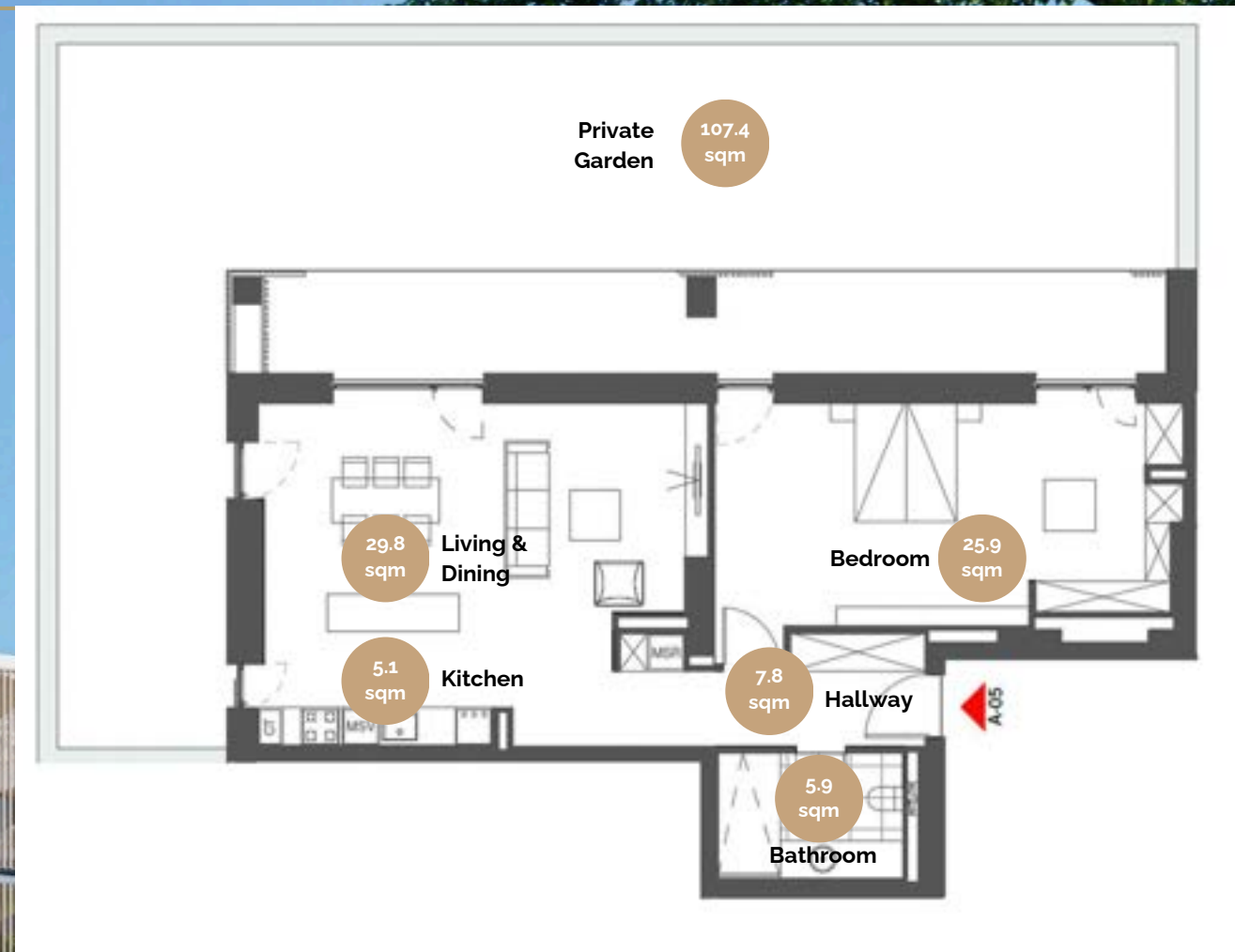




# APARTMENT TYPE A05

|   |   |            |
|---|---|------------|
|    | BEDROOMS                                  | 1          |
|   | BATHROOMS                                 | 1          |
|  | PRIVATE GARDEN                            | 107,40 SQM |
|  | TOTAL BUILT SURFACE<br>(INCLUDING GARDEN) | 213,9 SQM  |

EUR 225,000 + VAT





# STUDIO



# APARTMENT TYPE A06



BEDROOMS

1



BATHROOMS

1



TERRACE

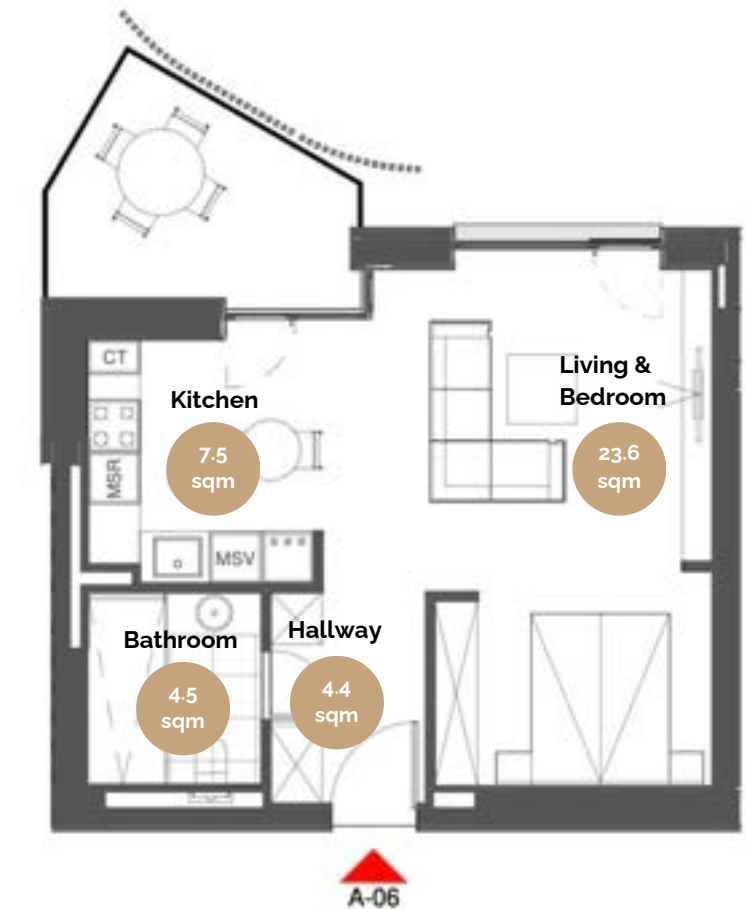
7.7 SQM



TOTAL BUILT SURFACE  
(INCLUDING TERRACE)

57.9 SQM

Starting from  
EUR 100,000 + VAT

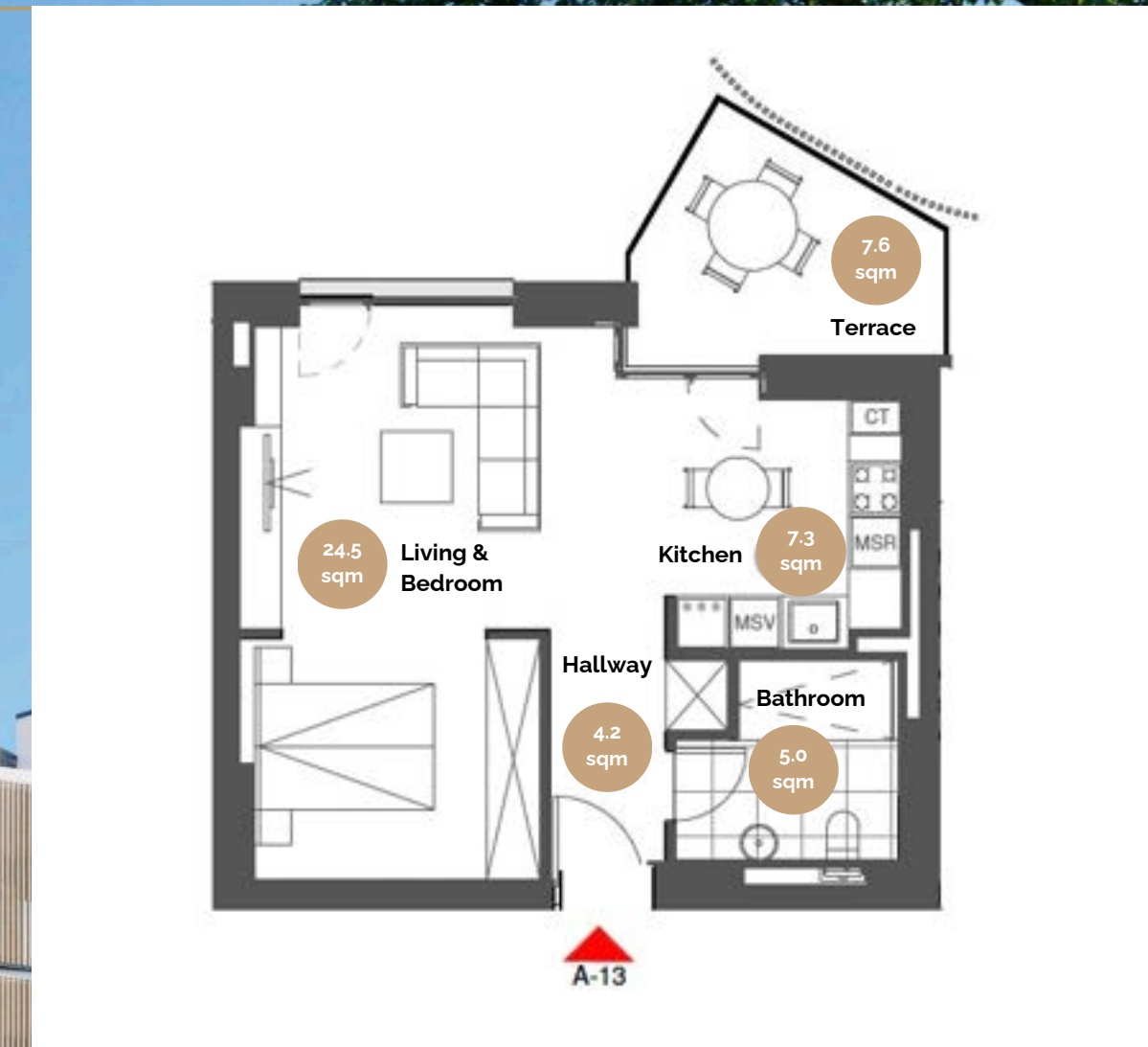




# APARTMENT TYPE A13

|  |  |          |
|--|--|----------|
|  | BEDROOMS                                   | 1        |
|  | BATHROOMS                                  | 1        |
|  | TERRACE                                    | 7,6 SQM  |
|  | TOTAL BUILT SURFACE<br>(INCLUDING TERRACE) | 58.9 SQM |

Starting from  
EUR 106,000 + VAT






# TWO ROOMS

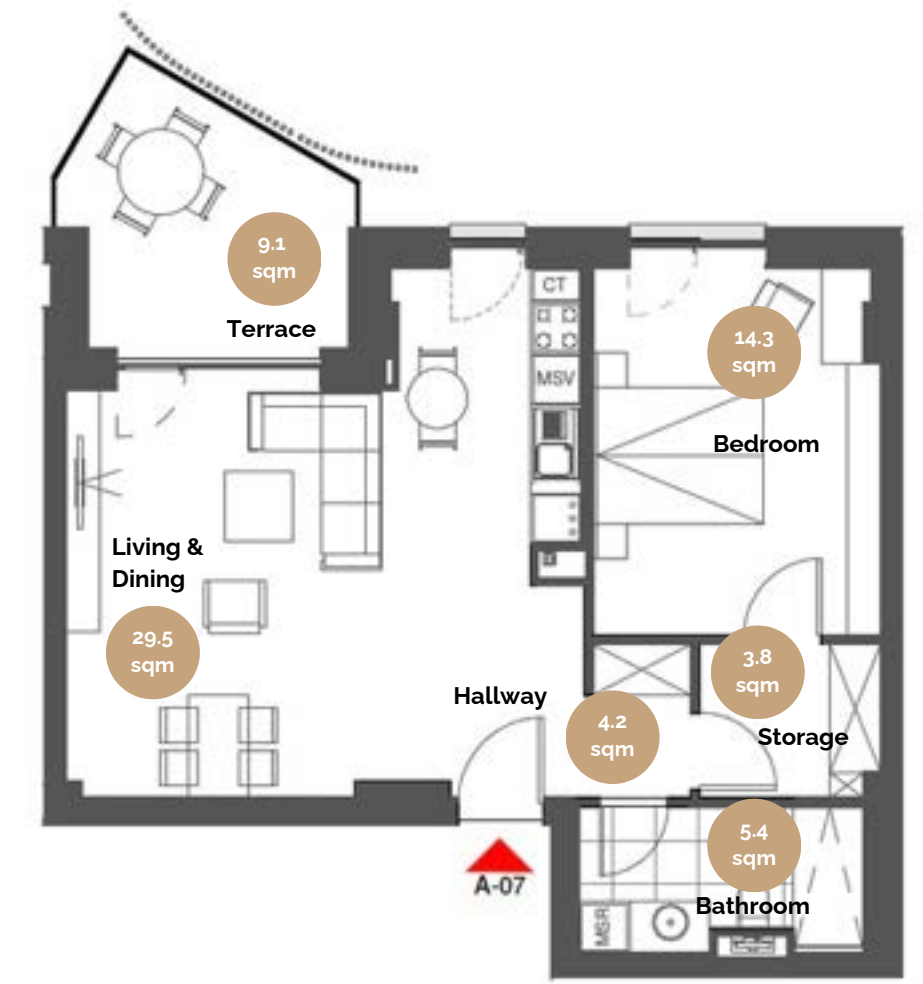




# APARTMENT TYPE A07




|   |  |          |
|---|--|----------|
|    | BEDROOMS                                   | 1        |
|   | BATHROOMS                                  | 1        |
|  | TERRACE                                    | 9,1 SQM  |
|  | TOTAL BUILT SURFACE<br>(INCLUDING TERRACE) | 77.8 SQM |

Starting from  
EUR 136,000 + VAT

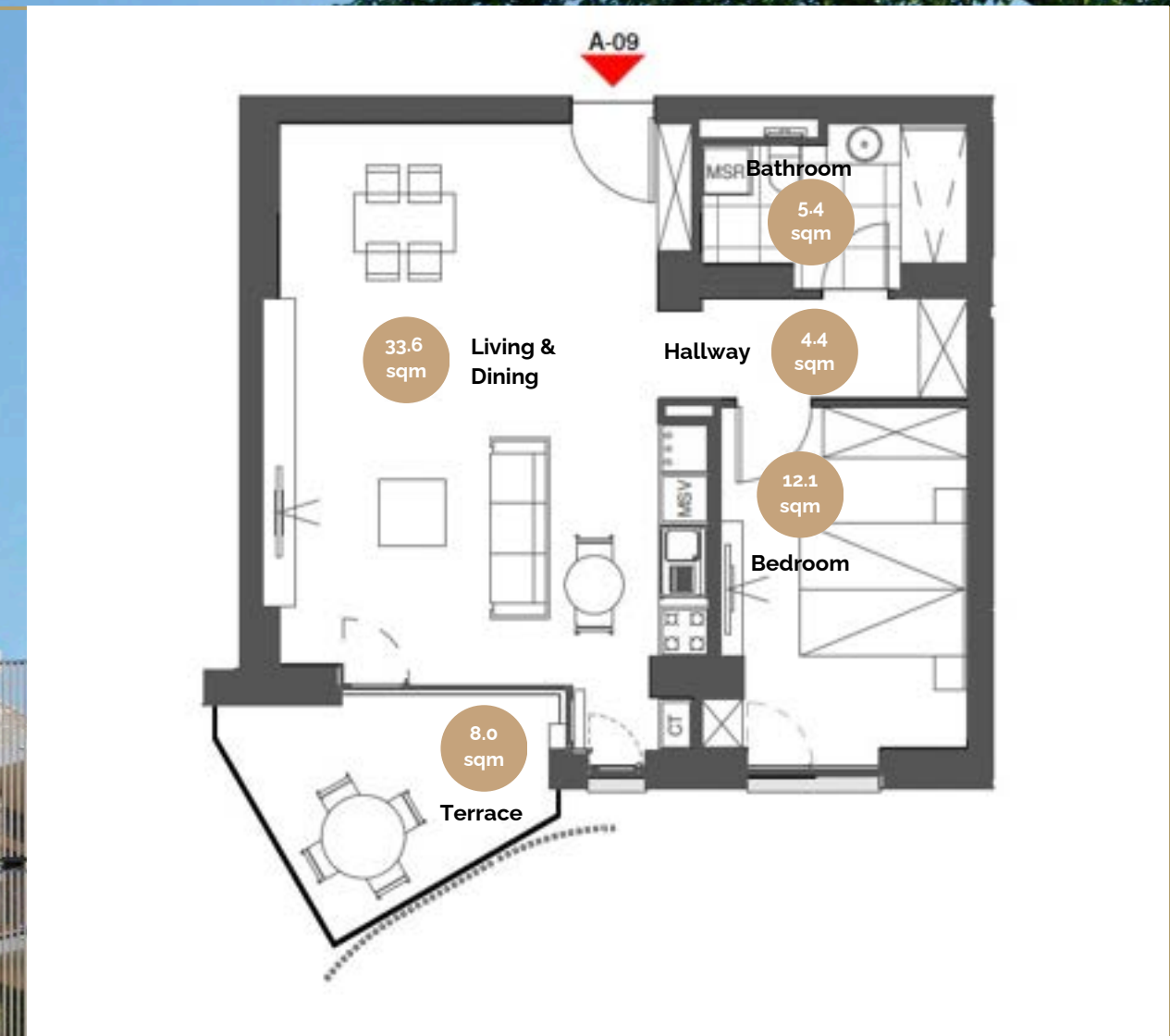




# APARTMENT TYPE A09


|   |  |          |
|---|--|----------|
|    | BEDROOMS                                   | 1        |
|   | BATHROOMS                                  | 1        |
|  | TERRACE                                    | 8.0 SQM  |
|  | TOTAL BUILT SURFACE<br>(INCLUDING TERRACE) | 76.0 SQM |

Starting from  
EUR 135,000 + VAT

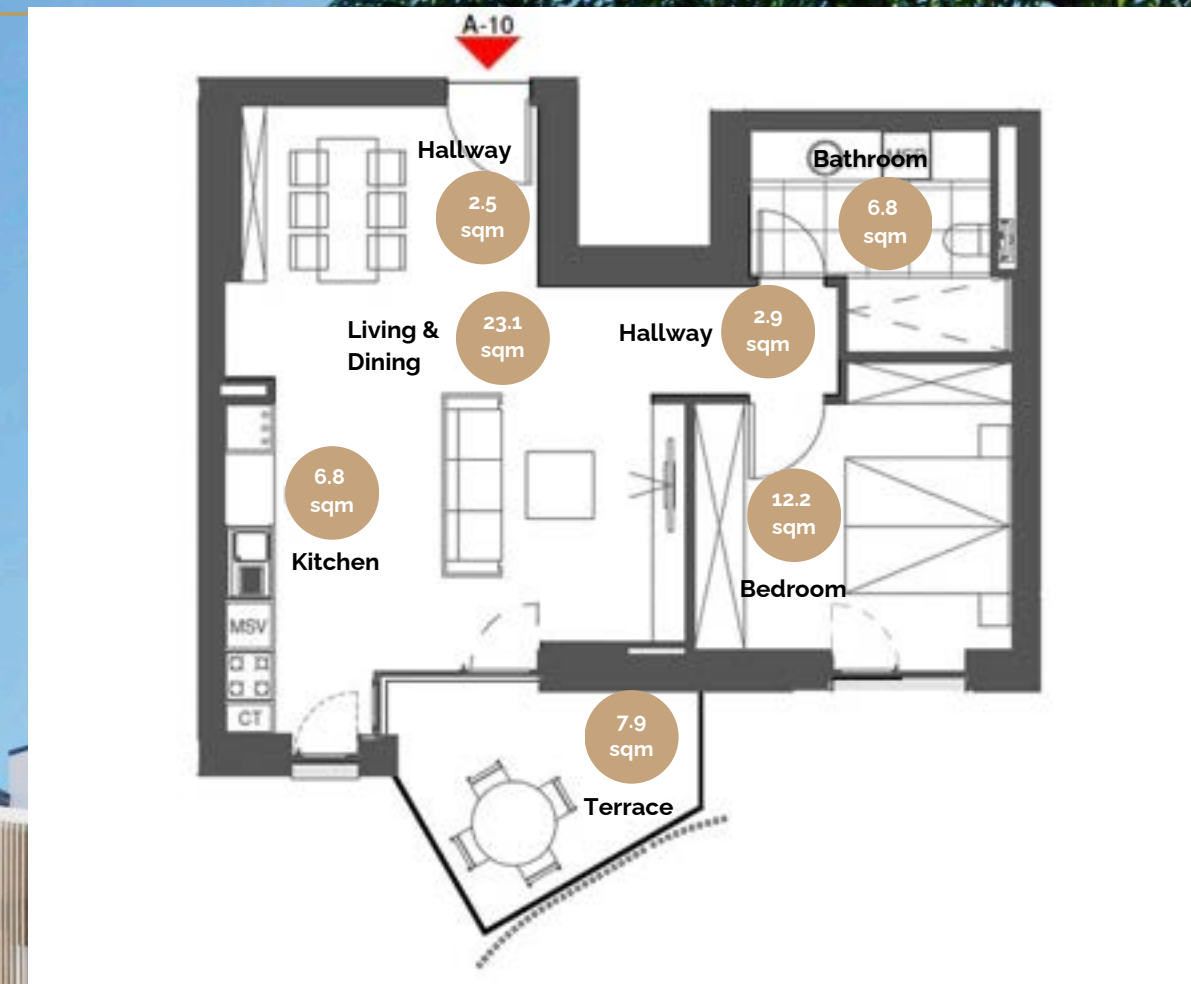




# APARTMENT TYPE A10




|   |  |          |
|---|--|----------|
|    | BEDROOMS                                   | 1        |
|   | BATHROOMS                                  | 1        |
|  | TERRACE                                    | 7,9 SQM  |
|  | TOTAL BUILT SURFACE<br>(INCLUDING TERRACE) | 73.7 SQM |

Starting from  
EUR 132,000 + VAT

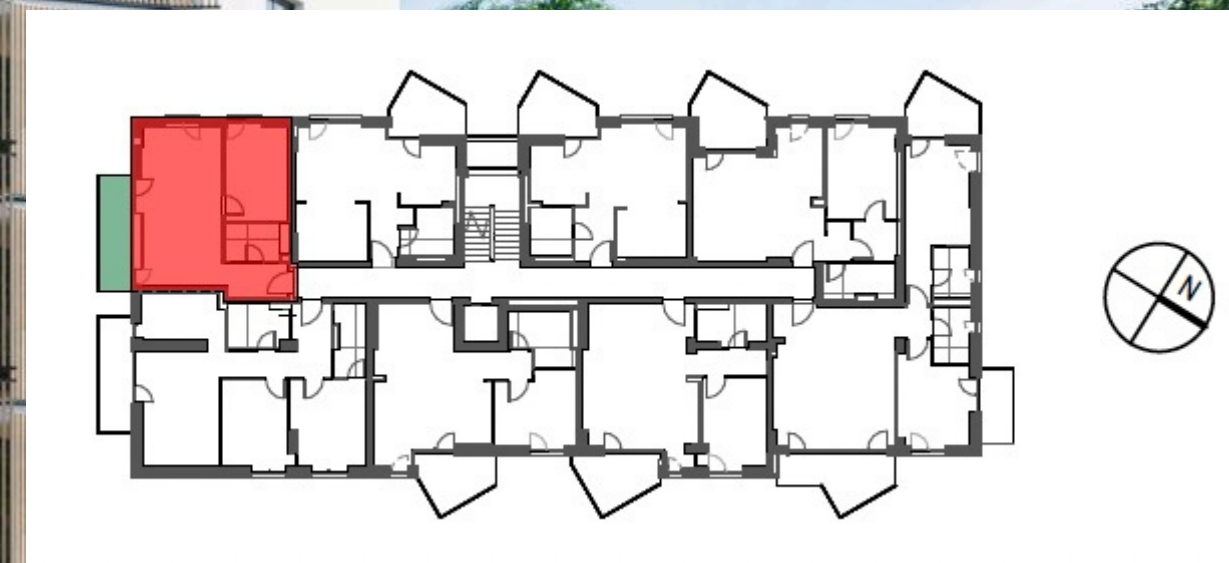
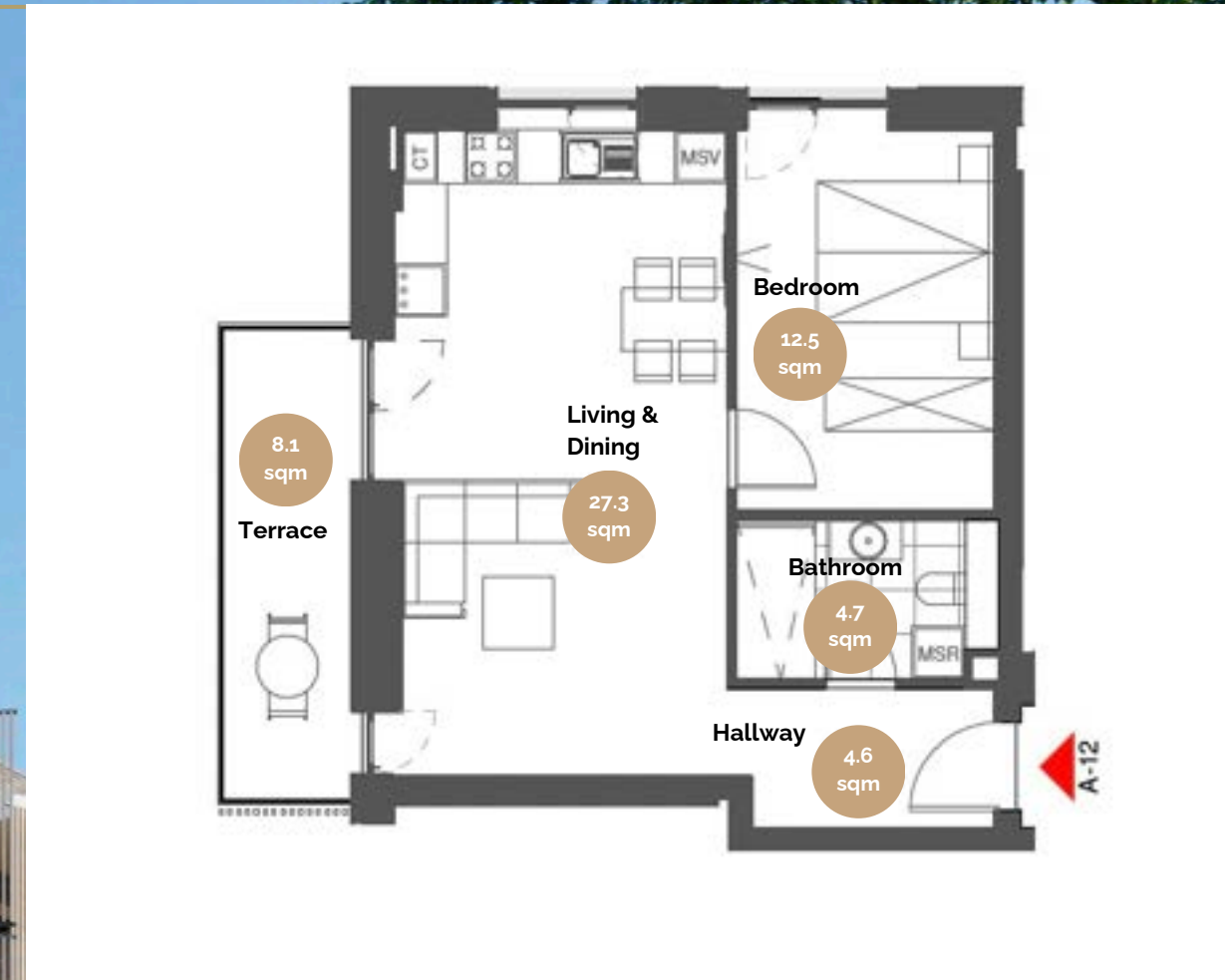




# APARTMENT TYPE A12

|   |  |          |
|---|--|----------|
|    | BEDROOMS                                   | 1        |
|   | BATHROOMS                                  | 1        |
|  | TERRACE                                    | 8,1 SQM  |
|  | TOTAL BUILT SURFACE<br>(INCLUDING TERRACE) | 68.9 SQM |

Starting from  
EUR 132,000 + VAT





# THREE ROOMS





# APARTMENT TYPE A08



BEDROOMS

2



BATHROOMS

2



TERRACE

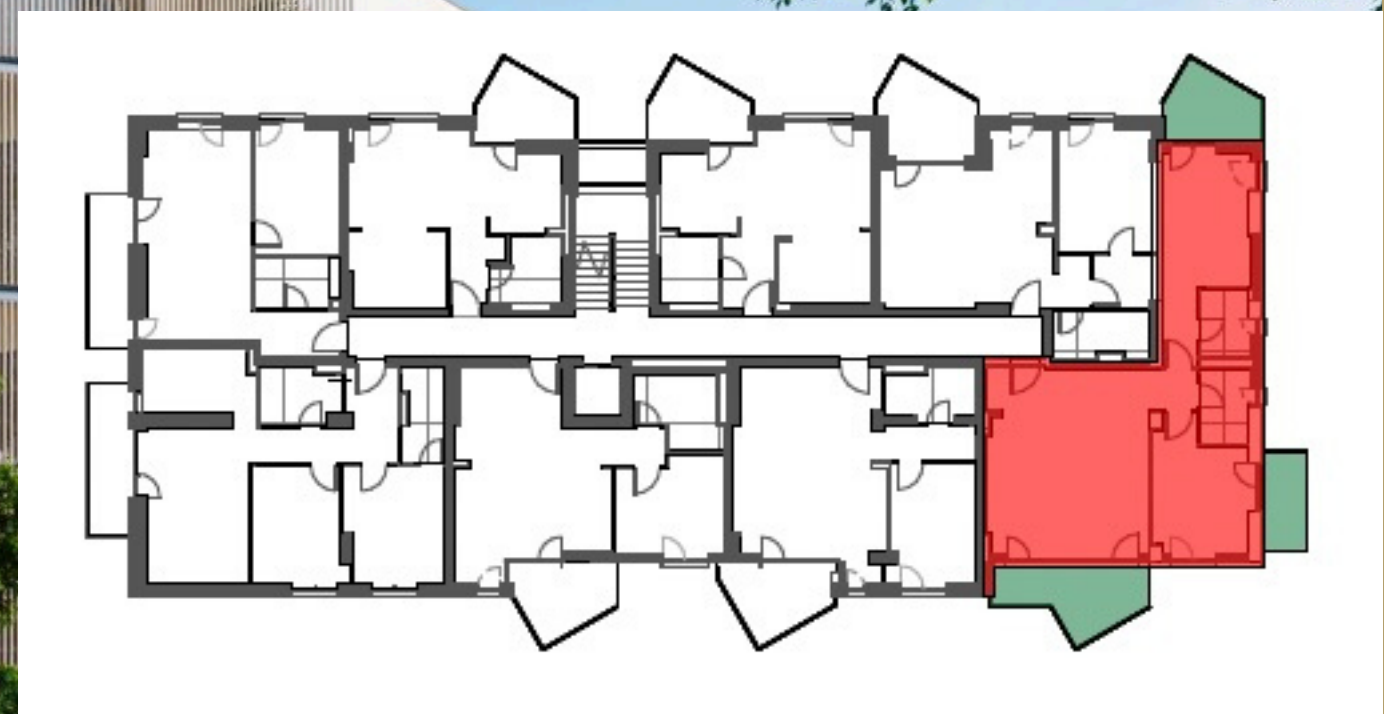
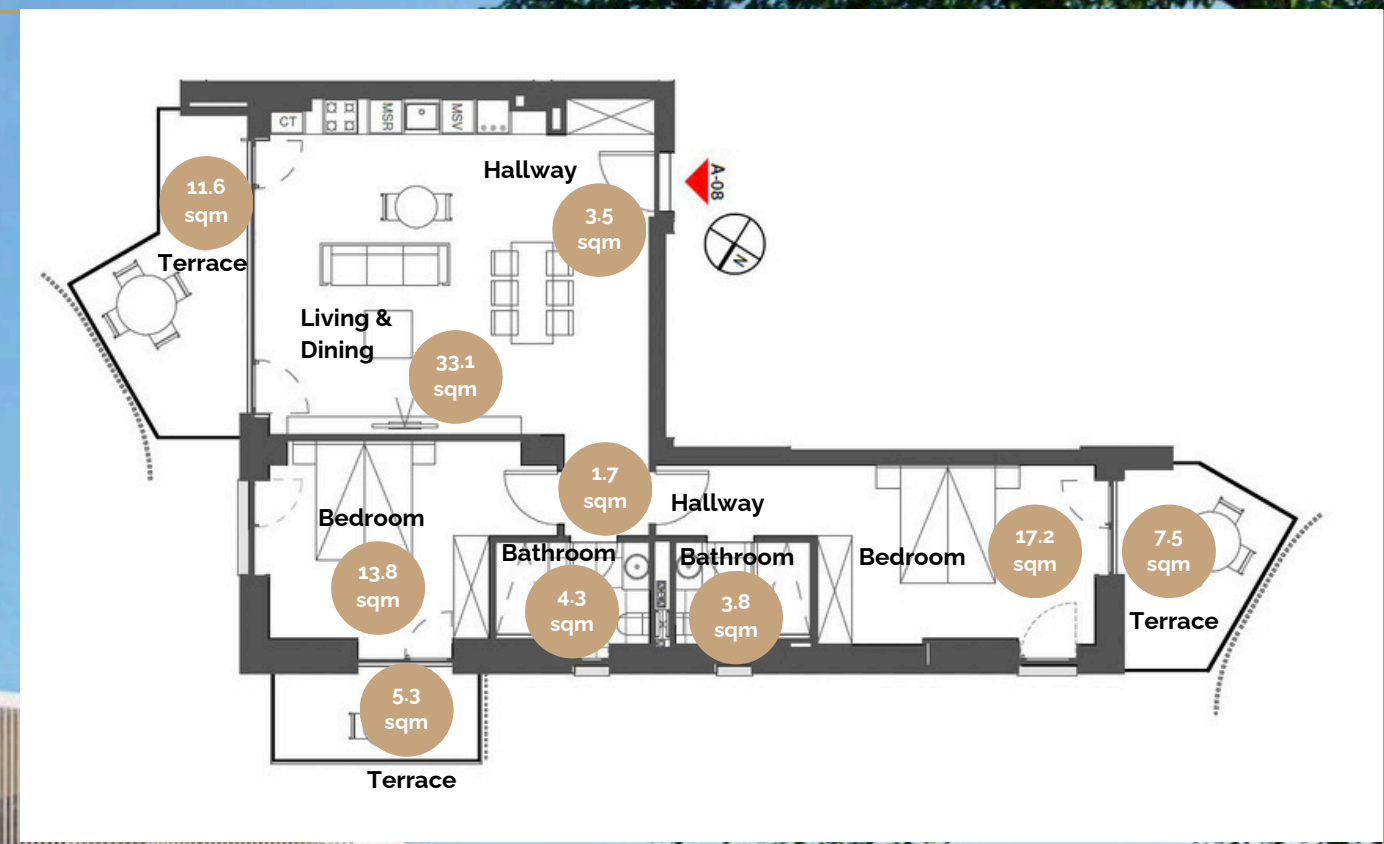
24,4 SQM



TOTAL BUILT SURFACE  
(INCLUDING TERRACE)

120.4 SQM

Starting from  
EUR 203,000 + VAT

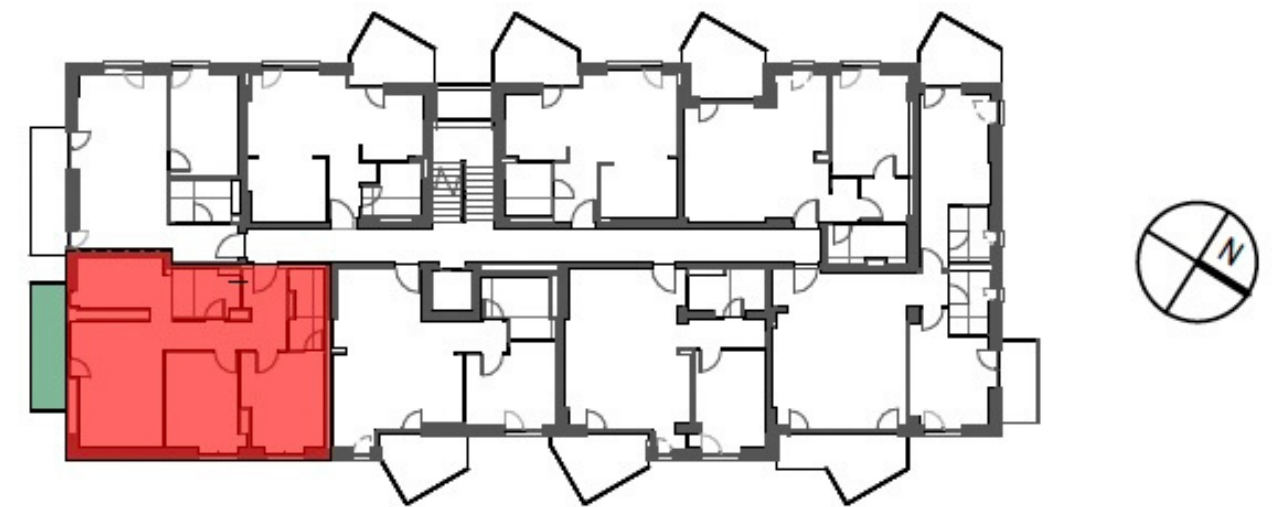
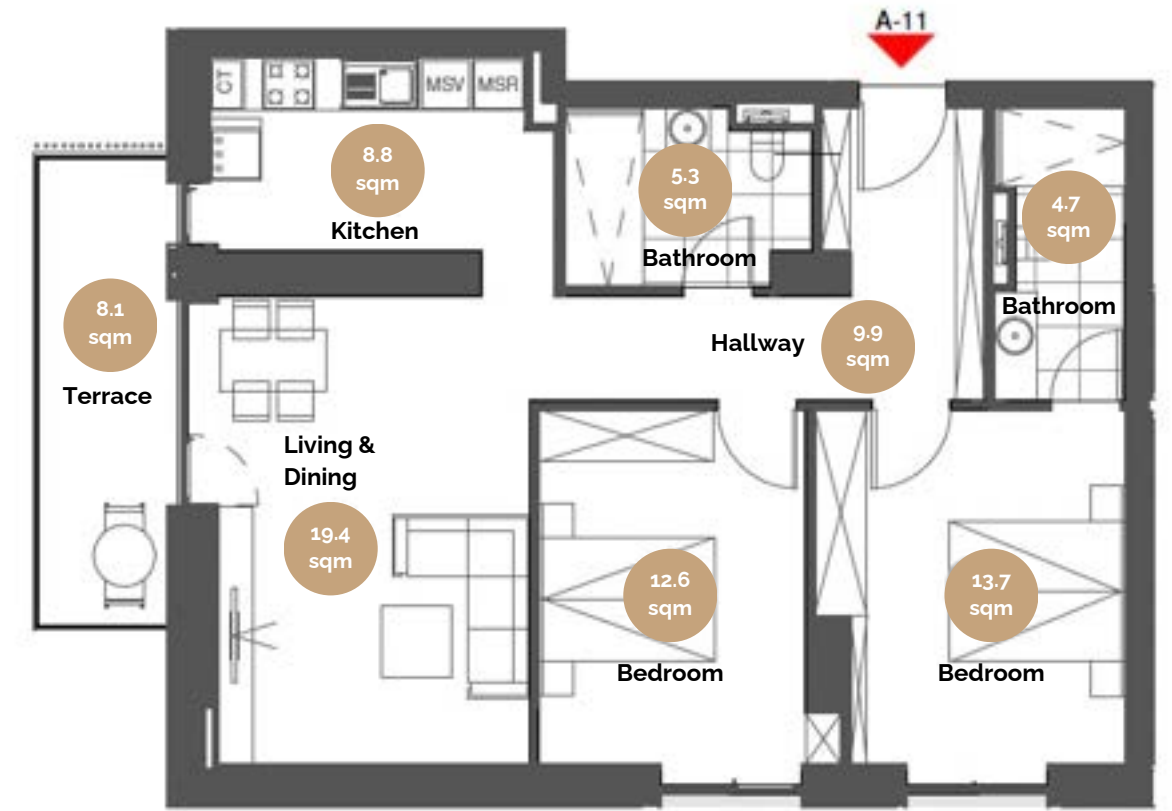




# APARTMENT TYPE A11

|   |  |           |
|---|--|-----------|
|    | BEDROOMS                                   | 2         |
|   | BATHROOMS                                  | 2         |
|  | TERRACE                                    | 8,1 SQM   |
|  | TOTAL BUILT SURFACE<br>(INCLUDING TERRACE) | 100.7 SQM |

Starting from  
EUR 200,000 + VAT





## PAYMENT PLAN:

- 30% signing date
- 25% first instalment
- 25% second instalment
- 20% delivery date

5% DISCOUNT - FULL PAYMENT





# Contact Us

Sales Representative



[sales@nationalgolf.ro](mailto:sales@nationalgolf.ro)



DC 159, Niculești Commune,  
Dambovita County, 137330, România

[www.nationalgolf.ro](http://www.nationalgolf.ro)

---

