



## LUXURY VILLA TYPE 7

BEDROOMS	3
BATHROOMS	4
OFFICE	1
TOTAL BUILT SURFACE	330.8 SQM
TERRACES	66.5 SQM
LAND SIZE	425 - 535 SQM
PRICE	EUR 640,000 + VAT (base)
	EUR 660,000 + VAT (L147)





## LUXURY VILLA TYPE 7

### Top quality finishes

Top quality finishes and materials, unique advantages and exclusive facilities are some of the core elements of the "National" residential concept you will get to experience as a future member of our community.

We seek comfort in every detail. Suitable for an active lifestyle, our villas, townhouses and apartments will welcome you with generous spaces, cleverly fitted according to the latest trends in interior design and architecture.

Each unit comes with top quality finishes and luminous interiors, with high ceilings and large glazed surfaces. All bathrooms will be completely furnished with top quality items like self-standing bath tubs and walk-in showers.

### Energy efficient homes

Each villa is energy efficient, thanks to the solar panels system, that will produce electricity to cover the consumption needs of each family. Underfloor heating system with temperature control, is the standard for all the villas.

### Windows & doors

The aluminum frame floor-to-ceiling windows measure more than 3 meter in height, with widths up to 7 meters.

The large entrance doors, measuring 1 meter width and 2.6 meters height, are made of metallic frames with wood finish ceramic claddings.

### Structure & walls

To guarantee a long stress-free ownership, your future home is build on a solid structure, with the best choice of high-quality materials and superior finishes.

All houses are built with concrete foundations and thick slab/concrete columns above ground structure. The exteriors walls and the partitions between apartments are made with 30 cm brick walls with dry wall cladding, in order to ensure optimal insulation.

The facades are composed of a mixt system of ceramic cladding and thermal system with plaster finish and aluminum frame floor-to-ceiling windows.

Interior walls are made of gypsum wall systems with double cladding on each side and will be covered with high quality washable white paint.

### Car parks

Each house will have two parking places marked on the pavement, with direct access to the front door entrance.

### Infrastructure

The roads within the complex are made of asphalt and all the sidewalks will be paved. Efficient lighting will be ensured by solar powered lighting poles and "green" ambient lighting in the common areas. We care for the environment; therefore, selective collection points of household waste will be installed in the compound.

### Gated community

Home is a worry-free space where you and your family are safe. We built a safe place where our community can grow and live the perfect life they deserve. For our peace of mind, the whole property is under video and human surveillance 24 hours/day, every day. Only you and your guests are permitted exclusive access into the residential areas.

### Owner's privileges





## LUXURY VILLA TYPE 7

### GROUND FLOOR

Total built surface ground floor: 112.1 sqm

Total terraces ground floor: 53.4 sqm

Total built Swimming pool: 35.5 sqm



GROUND FLOOR



## LUXURY VILLA TYPE 7

### FIRST FLOOR

Total built surface first floor: 116.7 sqm

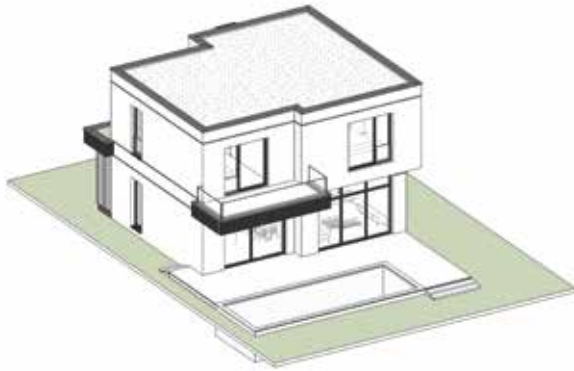
Total terraces first floor: 13.1 sqm



FIRST FLOOR



LUXURY VILLA  
TYPE 7





BIOETHICS AND LIFE-SCIENCE RESEARCH: A REVIEW			
Order No.	Sample Name	Sample Type	Sample Size
1	Human embryonic stem cells	Cell Culture	100
2	Human embryonic stem cells	Cell Culture	100
3	Human embryonic stem cells	Cell Culture	100
4	Human embryonic stem cells	Cell Culture	100
5	Human embryonic stem cells	Cell Culture	100
6	Human embryonic stem cells	Cell Culture	100
7	Human embryonic stem cells	Cell Culture	100
8	Human embryonic stem cells	Cell Culture	100
9	Human embryonic stem cells	Cell Culture	100
10	Human embryonic stem cells	Cell Culture	100
11	Human embryonic stem cells	Cell Culture	100
12	Human embryonic stem cells	Cell Culture	100
13	Human embryonic stem cells	Cell Culture	100
14	Human embryonic stem cells	Cell Culture	100
15	Human embryonic stem cells	Cell Culture	100
16	Human embryonic stem cells	Cell Culture	100
17	Human embryonic stem cells	Cell Culture	100
18	Human embryonic stem cells	Cell Culture	100
19	Human embryonic stem cells	Cell Culture	100
20	Human embryonic stem cells	Cell Culture	100
21	Human embryonic stem cells	Cell Culture	100
22	Human embryonic stem cells	Cell Culture	100
23	Human embryonic stem cells	Cell Culture	100
24	Human embryonic stem cells	Cell Culture	100
25	Human embryonic stem cells	Cell Culture	100
26	Human embryonic stem cells	Cell Culture	100
27	Human embryonic stem cells	Cell Culture	100
28	Human embryonic stem cells	Cell Culture	100
29	Human embryonic stem cells	Cell Culture	100
30	Human embryonic stem cells	Cell Culture	100
31	Human embryonic stem cells	Cell Culture	100
32	Human embryonic stem cells	Cell Culture	100
33	Human embryonic stem cells	Cell Culture	100
34	Human embryonic stem cells	Cell Culture	100
35	Human embryonic stem cells	Cell Culture	100
36	Human embryonic stem cells	Cell Culture	100
37	Human embryonic stem cells	Cell Culture	100
38	Human embryonic stem cells	Cell Culture	100
39	Human embryonic stem cells	Cell Culture	100
40	Human embryonic stem cells	Cell Culture	100
41	Human embryonic stem cells	Cell Culture	100
42	Human embryonic stem cells	Cell Culture	100
43	Human embryonic stem cells	Cell Culture	100
44	Human embryonic stem cells	Cell Culture	100
45	Human embryonic stem cells	Cell Culture	100
46	Human embryonic stem cells	Cell Culture	100
47	Human embryonic stem cells	Cell Culture	100
48	Human embryonic stem cells	Cell Culture	100
49	Human embryonic stem cells	Cell Culture	100
50	Human embryonic stem cells	Cell Culture	100
51	Human embryonic stem cells	Cell Culture	100
52	Human embryonic stem cells	Cell Culture	100
53	Human embryonic stem cells	Cell Culture	100
54	Human embryonic stem cells	Cell Culture	100
55	Human embryonic stem cells	Cell Culture	100
56	Human embryonic stem cells	Cell Culture	100
57	Human embryonic stem cells	Cell Culture	100
58	Human embryonic stem cells	Cell Culture	100
59	Human embryonic stem cells	Cell Culture	100
60	Human embryonic stem cells	Cell Culture	100
61	Human embryonic stem cells	Cell Culture	100
62	Human embryonic stem cells	Cell Culture	100
63	Human embryonic stem cells	Cell Culture	100
64	Human embryonic stem cells	Cell Culture	100
65	Human embryonic stem cells	Cell Culture	100
66	Human embryonic stem cells	Cell Culture	100
67	Human embryonic stem cells	Cell Culture	100
68	Human embryonic stem cells	Cell Culture	100
69	Human embryonic stem cells	Cell Culture	100
70	Human embryonic stem cells	Cell Culture	100
71	Human embryonic stem cells	Cell Culture	100
72	Human embryonic stem cells	Cell Culture	100
73	Human embryonic stem cells	Cell Culture	100
74	Human embryonic stem cells	Cell Culture	100
75	Human embryonic stem cells	Cell Culture	100
76	Human embryonic stem cells	Cell Culture	100
77	Human embryonic stem cells	Cell Culture	100
78	Human embryonic stem cells	Cell Culture	100
79	Human embryonic stem cells	Cell Culture	100
80	Human embryonic stem cells	Cell Culture	100
81	Human embryonic stem cells	Cell Culture	100
82	Human embryonic stem cells	Cell Culture	100
83	Human embryonic stem cells	Cell Culture	100
84	Human embryonic stem cells	Cell Culture	100
85	Human embryonic stem cells	Cell Culture	100
86	Human embryonic stem cells	Cell Culture	100
87	Human embryonic stem cells	Cell Culture	100
88	Human embryonic stem cells	Cell Culture	100
89	Human embryonic stem cells	Cell Culture	100
90	Human embryonic stem cells	Cell Culture	100
91	Human embryonic stem cells	Cell Culture	100
92	Human embryonic stem cells	Cell Culture	100
93	Human embryonic stem cells	Cell Culture	100
94	Human embryonic stem cells	Cell Culture	100
95	Human embryonic stem cells	Cell Culture	100
96	Human embryonic stem cells	Cell Culture	100
97	Human embryonic stem cells	Cell Culture	100
98	Human embryonic stem cells	Cell Culture	100
99	Human embryonic stem cells	Cell Culture	100
100	Human embryonic stem cells	Cell Culture	100